

Government of India  
Ministry of Earth Sciences  
India Meteorological Department



Press Release

Date: 02<sup>nd</sup> March, 2025

Time of Issue: 1315 hours IST

**Subject: i) A fresh Western Disturbance likely to cause scattered to fairly widespread rainfall/snowfall over Western Himalayan Region till 04<sup>th</sup> and with isolated heavy falls on 03<sup>rd</sup> March. Isolated rainfall also likely over adjoining plains on 03<sup>rd</sup> March, 2025.**

**ii) Heat wave conditions very likely in isolated pockets over Coastal Karnataka on 02<sup>nd</sup> & 03<sup>rd</sup> March.**

**i. Realised Severe Weather (Rainfall/snowfall) due to ongoing Western Disturbance during past 24 hours till 0830 hours IST of today 02<sup>nd</sup> March 2025:**

- ❖ Light to moderate **Rainfall/Snowfall** observed at most places over Arunachal Pradesh; Light to moderate **Rainfall** observed at most places over Sub-Himalayan West Bengal & Sikkim; at many places over Tamilnadu Puducherry & Karaikal; at a few places over Assam & Meghalaya, Lakshadweep; at isolated places over Nagaland, Manipur, Mizoram & Tripura, Andaman & Nicobar Islands, Gangetic West Bengal, Jharkhand, Bihar, Himachal Pradesh, Uttarakhand, Haryana, West Uttar Pradesh, East Rajasthan, Kerala & Mahe.
- ❖ **Heavy rainfall/snowfall** recorded at isolated places over Arunachal Pradesh; **Heavy rainfall** at isolated places over south Assam & Meghalaya, Tamil Nadu.
- ❖ **Thunderstorm with lightning** reported at isolated places over Arunachal Pradesh, Assam, Mizoram, Bihar, Himachal Pradesh, Uttarakhand.
- ❖ **Hailstorm** recorded at isolated places over Mizoram.
- ❖ **Gusty winds** observed at isolated places over Assam.
- ❖ **For more details of realised weather, kindly refer Annexure I**

**Temperature:**

- ❖ For temperature observations during past 24 hours till 0830 hours IST of today are provided in **Annexure II**

**ii. Weather Systems, Forecast and warning (Annexure III & IV):**

- ❖ A Western Disturbance as a trough in lower to upper tropospheric levels with its axis at 3.1 km above mean sea level runs roughly along Long. 52°E to the north of Lat. 27°N. Under its influence;
  - ✓ **Isolated to Scattered** light/moderate rainfall/snowfall accompanied with isolated **thunderstorms and lightning** very likely over Jammu-Kashmir-Ladakh-Gilgit-Baltistan-Muzaffarabad, Himachal Pradesh & Uttarakhand on 03<sup>rd</sup> & 04<sup>th</sup>; with **hailstorm** over Punjab on 03<sup>rd</sup>; **Isolated heavy rainfall/snowfall** likely at isolated places likely over Jammu-Kashmir-Ladakh-Gilgit-Baltistan-Muzaffarabad and Himachal Pradesh on 03<sup>rd</sup> March.
- ❖ A cyclonic circulation lies over northeast Assam & neighbourhood in lower tropospheric levels. Under its Influence,
  - ✓ **Isolated to Scattered** light/moderate rainfall/snowfall accompanied with **thunderstorm and lightning** over Arunachal Pradesh; with **gusty winds (speed 30-50 kmph)** very likely over Assam & Meghalaya and Nagaland, Manipur, Mizoram & Tripura on 02<sup>nd</sup> March.
- ❖ The upper air cyclonic circulation over West Equatorial Indian Ocean & adjoining Comorin-Maldives area upto middle tropospheric level. The trough in easterlies from above cyclonic circulation to Lakshadweep area at lower tropospheric level; Also an active easterly wave; Under these influence:
  - ✓ **Isolated to Scattered** light/moderate rainfall accompanied with **thunderstorm, lightning** very likely over Tamilnadu, Kerala and Lakshadweep on 02<sup>nd</sup> March. **Isolated heavy rainfall on south Kerala & Lakshadweep on 02<sup>nd</sup> March.**

## Temperature Forecast:

### Forecast of temperature:

#### Maximum temperature:

- ❖ Rise in maximum temperatures by about 2°C likely over Northwest India during next 24 hours and gradual fall by 2-4°C subsequent 3-4 days.
- ❖ No significant change in maximum temperatures likely over Central India during next 24 hours and gradual fall by about 2-4°C thereafter.
- ❖ No significant change in maximum temperatures likely over Maharashtra region during next 2 days and gradual fall by about 2-4°C thereafter.
- ❖ Gradual rise in maximum temperatures by 2-3°C likely over Andhra Pradesh region during next 2-3 days.
- ❖ No significant change in maximum temperatures likely over rest parts of India during next 4-5 days.

### Heat Wave and Hot & Humid weather warnings:

- ❖ **Heat wave conditions** very likely in isolated pockets over Coastal Karnataka on 02<sup>nd</sup> & 03<sup>rd</sup> March.
- ❖ **Hot and humid weather** very likely to prevail over Konkan & Goa on during 02<sup>nd</sup>-05<sup>th</sup>; Coastal Karnataka on 04<sup>th</sup> & 05<sup>th</sup> March.

### Fishermen Warnings:

- ❖ Squally Weather with Wind Speed Reaching 35 To 45 Gusting To 55 Kmph Likely to Prevail Over Maldives, Lakshadweep Areas & Adjoining Comorin Area and Southeast Arabian Sea on 02<sup>nd</sup>; Southeast Arabian Sea & Adjoining Maldives, Lakshadweep Areas on 03<sup>rd</sup> March.

### iii. Weather conditions and forecast over Delhi/NCR during 02<sup>nd</sup> March to 05<sup>th</sup> March. 2025 (Annexure V)

For more details, kindly refer National Weather Bulletin:

[https://mausam.imd.gov.in/responsive/all\\_india\\_forecast\\_bulletin.php](https://mausam.imd.gov.in/responsive/all_india_forecast_bulletin.php)

For District wise warnings refer: <https://mausam.imd.gov.in/responsive/districtWiseWarningGIS.php>

## ANNEXURE I

### Significant rainfall/snowfall recorded during past 24 hours till 0830 hours IST of today (in cm):

- ❖ **Tamilnadu:** Srivaikuntam (dist Toothukudi) 11, Rameswaram (dist Ramanathapuram) 10, Thangachimadam (dist Ramanathapuram) 9, Oothu (dist Tirunelveli) 8, Nalumukku (dist Tirunelveli), Kakkachi (dist Tirunelveli) 7 each,
- ❖ **Arunachal Pradesh:** Hayuliang\_circle(aws) (dist Anjaw) 10, Miao (dist Changlang) 5,
- ❖ **Assam & Meghalaya:** Margherita (dist Tinsukia) 7, Khowang (dist Dibrugarh) 4,

### Thunderstorm reported:

- ❖ **Himachal Pradesh:** Shimla; **Uttarakhand:** Chakrat; **Bihar:** Patna Valmikinagar; Arunachal Pradesh: Itanagar; Assam: Tezpur, Jorhat; Mizoram: Imphal

### Hailstorm reported:

- ❖ Mizoram: Imphal

### Gusty winds reported (in Knots):

- ❖ **Assam:** Majuli

- ❖ Maximum temperatures were in the range of 35-40°C at many places over Madhya Maharashtra, Marathwada, Vidarbha, Odisha; at a few places over Telangana, south Saurashtra & Kutch, Rayalaseema; 30-35°C at most places over Andaman & Nicobar Islands; at many places over Madhya Pradesh, Tamilnadu Puducherry & Karaikal; at a few places over south Rajasthan, Gujarat Region. Yesterday, the highest **maximum temperature** of 38.5°C was reported at **Akola (Vidarbha)** over the plains of the country.
- ❖ During the past 24 hours, **maximum temperatures** had fallen by 1-3°C over Central Uttar Pradesh, East Rajasthan, Saurashtra & Kutch, West Madhya Pradesh, Assam & Meghalaya. It has risen by 4-7°C over Western Himalayan region; by 1-4°C over east India, East Madhya Pradesh, Odisha, Telangana and no significant change over rest parts of the country.
- ❖ Maximum temperatures were **markedly above normal (5.1°C or more)** at isolated places over Gangetic West Bengal; **appreciably above normal (3.1°C to 5.0°C)** at a few places over Jharkhand, East Madhya Pradesh; at isolated places over West Madhya Pradesh, Chhattisgarh, Odisha, Coastal Karnataka; **above normal (1.6°C to 3.0°C)** at a few places over East Rajasthan, Coastal Andhra Pradesh & Yanam, Konkan & Goa, Madhya Maharashtra; at isolated places over West Rajasthan, East Uttar Pradesh, Bihar, Vidarbha, Telangana, Sub-Himalayan West Bengal & Sikkim, Assam & Meghalaya, Nagaland, Manipur, Mizoram & Tripura. These were **appreciably below normal (-5.0°C to -3.1°C)** at isolated places over Himachal Pradesh; **below normal (-3.0°C to -1.6°C)** at isolated places over Jammu-Kashmir-Ladakh-Gilgit-Baltistan-Muzaffarabad, West Uttar Pradesh, Tamil Nadu, Puducherry & Karaikal and near normal over rest parts of the country.

Fig. 1: Maximum Temperatures

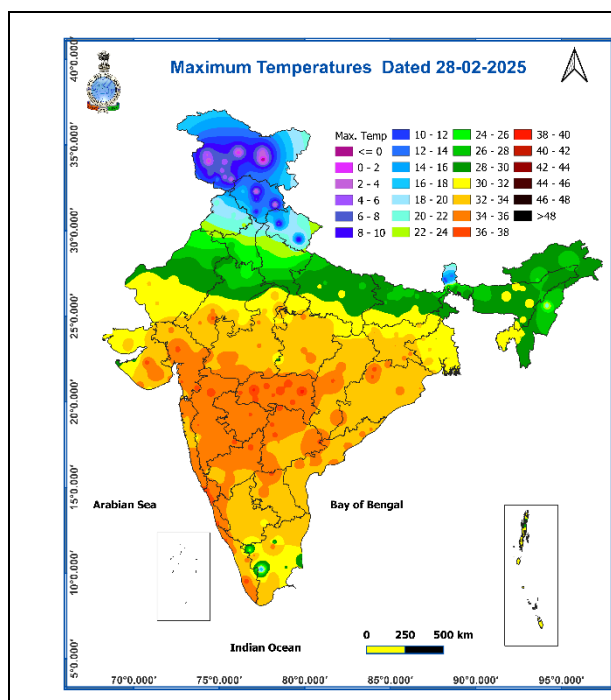
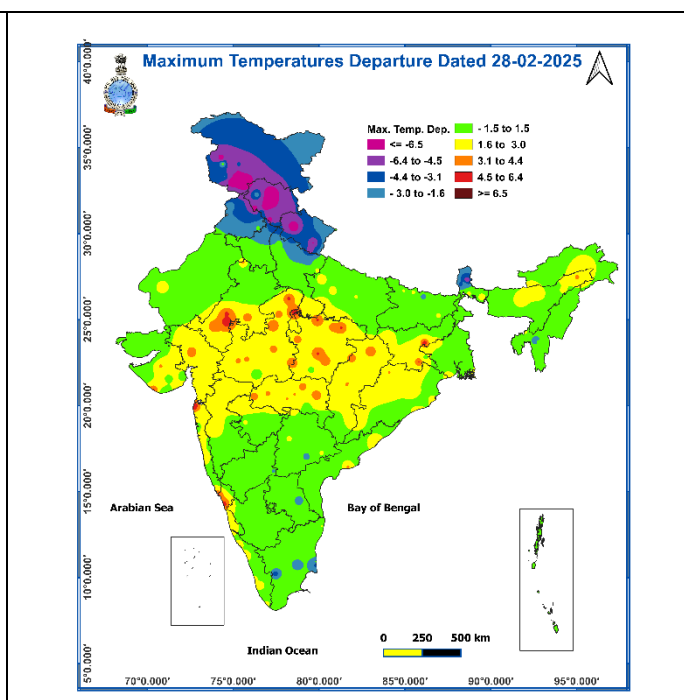


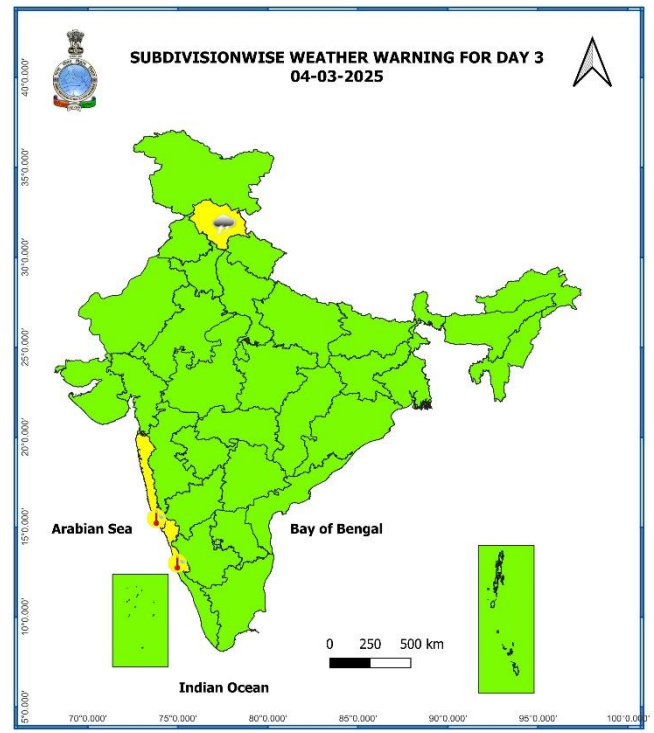
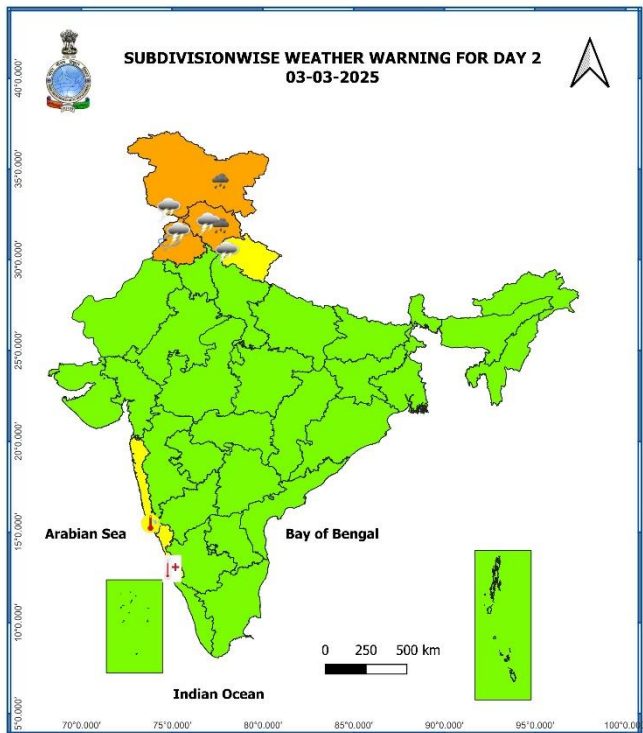
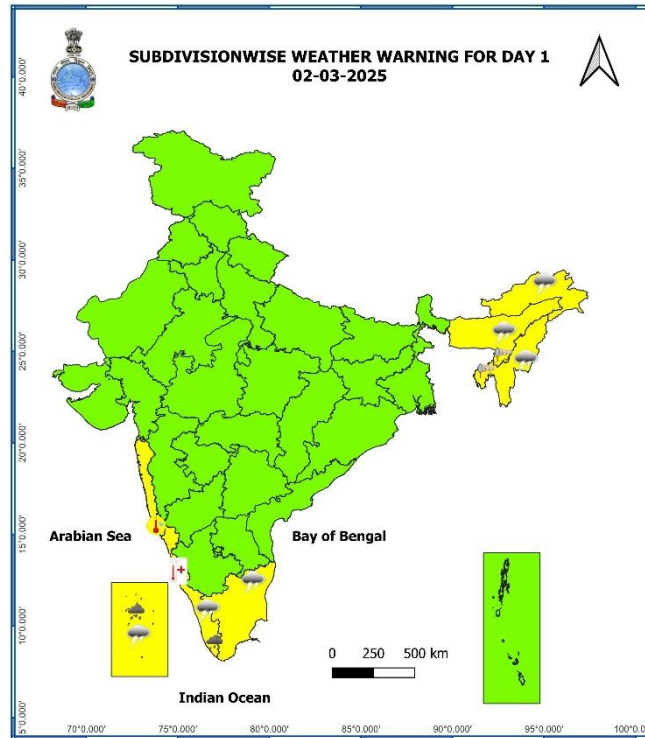
Fig. 2: Departure of Maximum Temperatures

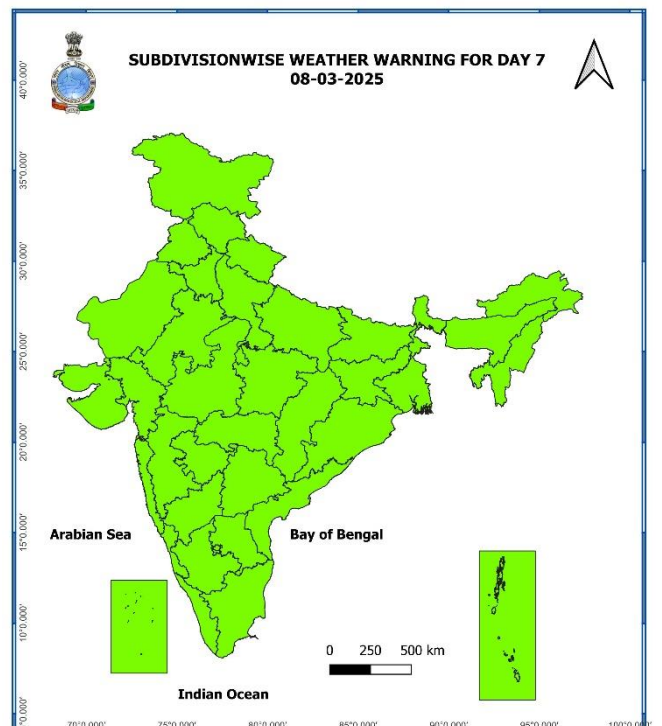
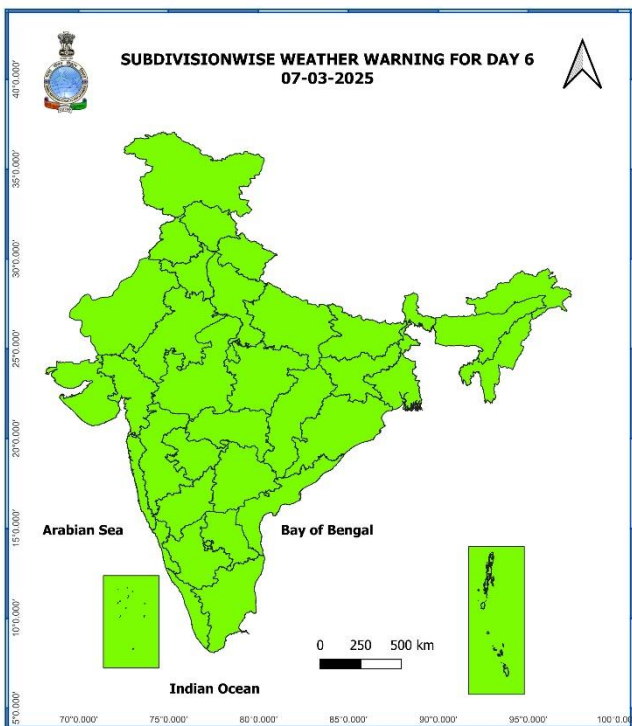
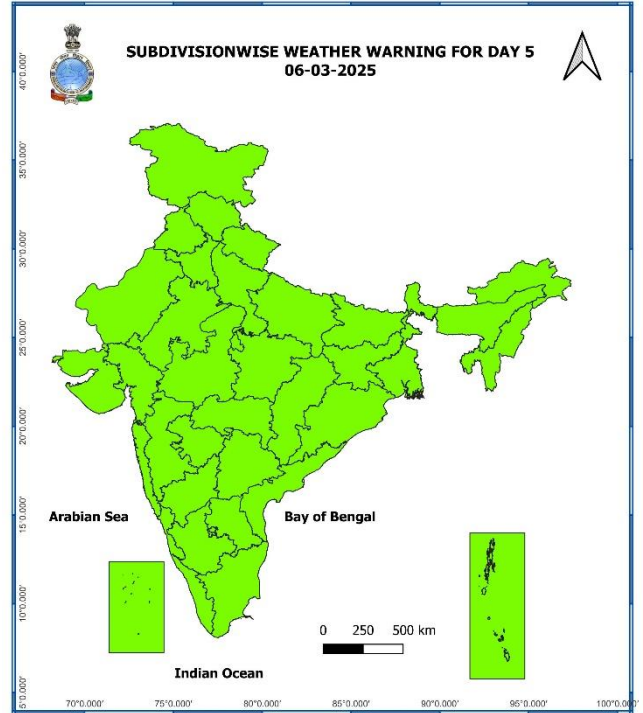
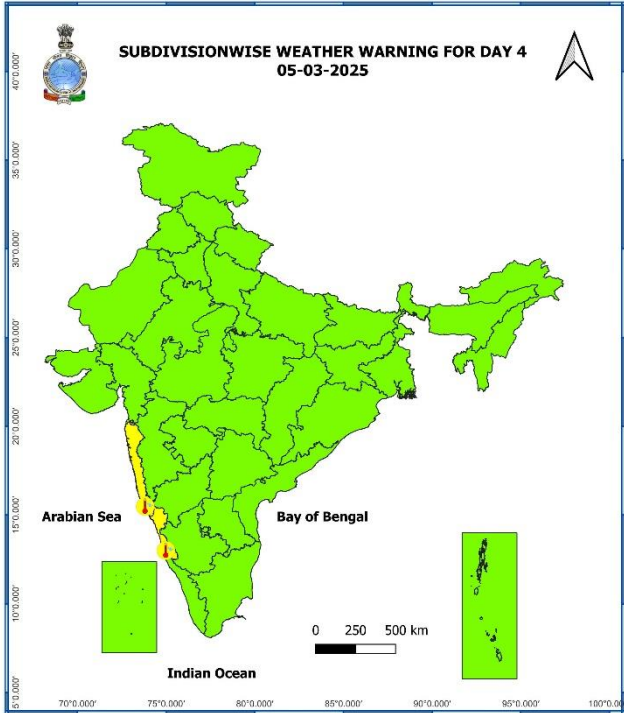


## 7 Days Rainfall Forecast

S. No.	Subdivision	02-Mar	03-Mar	04-Mar	05-Mar	06-Mar	07-Mar	08-Mar
		Day 1	Day 2	Day 3	Day 4	Day 5	Day 6	Day 7
1	ANDAMAN & NICOBAR ISLANDS	ISOL	ISOL	DRY	DRY	DRY	DRY	ISOL
2	ARUNACHAL PRADESH	SCT	ISOL	ISOL	ISOL	SCT	ISOL	ISOL
3	ASSAM & MEGHALAYA	ISOL	ISOL	DRY	DRY	ISOL	DRY	ISOL
4	NAGALAND, MANIPUR, MIZORAM & TRIPURA	ISOL	ISOL	DRY	DRY	DRY	DRY	DRY
5	SUB-HIMALAYAN WEST BENGAL & SIKKIM	ISOL	DRY	ISOL	ISOL	DRY	ISOL	ISOL
6	GANGETIC WEST BENGAL	DRY	DRY	DRY	DRY	DRY	DRY	DRY
7	ODISHA	DRY	DRY	DRY	DRY	DRY	DRY	DRY
8	JHARKHAND	DRY	DRY	DRY	DRY	DRY	DRY	DRY
9	BIHAR	DRY	DRY	DRY	DRY	DRY	DRY	ISOL
10	EAST UTTAR PRADESH	DRY	ISOL	DRY	DRY	DRY	DRY	DRY
11	WEST UTTAR PRADESH	DRY	DRY	DRY	DRY	DRY	DRY	DRY
12	UTTARAKHAND	DRY	SCT	ISOL	DRY	DRY	DRY	DRY
13	HARYANA CHANDIGARH & DELHI	DRY	ISOL	DRY	DRY	DRY	DRY	DRY
14	PUNJAB	DRY	SCT	DRY	DRY	DRY	DRY	DRY
15	HIMACHAL PRADESH	ISOL	WS	FWS	DRY	DRY	DRY	DRY
16	JAMMU & KASHMIR AND LADAKH	ISOL	WS	SCT	DRY	DRY	DRY	DRY
17	WEST RAJASTHAN	DRY	ISOL	DRY	DRY	DRY	DRY	DRY
18	EAST RAJASTHAN	DRY	DRY	DRY	DRY	DRY	DRY	DRY
19	WEST MADHYA PRADESH	DRY	DRY	DRY	DRY	DRY	DRY	DRY
20	EAST MADHYA PRADESH	DRY	DRY	DRY	DRY	DRY	DRY	DRY
21	GUJARAT REGION	DRY	DRY	DRY	DRY	DRY	DRY	DRY
22	SAURASHTRA & KUTCH	DRY	DRY	DRY	DRY	DRY	DRY	DRY
23	KONKAN & GOA	DRY	DRY	DRY	DRY	DRY	DRY	DRY
24	MADHYA MAHARASHTRA	DRY	DRY	DRY	DRY	DRY	DRY	DRY
25	MARATHAWADA	DRY	DRY	DRY	DRY	DRY	DRY	DRY
26	VIDARBHA	DRY	DRY	DRY	DRY	DRY	DRY	DRY
27	CHHATTISGARH	ISOL	DRY	DRY	DRY	DRY	DRY	DRY
28	COASTAL ANDHRA PRADESH & YANAM	DRY	DRY	DRY	DRY	DRY	DRY	DRY
29	TELANGANA	DRY	DRY	DRY	DRY	DRY	DRY	DRY
30	RAYALASEEMA	DRY	DRY	DRY	DRY	DRY	DRY	DRY
31	TAMILNADU PUDUCHERRY & KARAIKAL	ISOL	ISOL	DRY	DRY	DRY	DRY	DRY
32	COASTAL KARNATAKA	DRY	DRY	DRY	DRY	DRY	DRY	DRY
33	NORTH INTERIOR KARNATAKA	DRY	DRY	DRY	DRY	DRY	DRY	DRY
34	SOUTH INTERIOR KARNATAKA	DRY	DRY	DRY	DRY	DRY	DRY	DRY
35	KERALA & MAHE	SCT	ISOL	DRY	ISOL	ISOL	ISOL	ISOL
36	LAKSHADWEEP	SCT	SCT	DRY	DRY	DRY	DRY	DRY

- As the lead period increases forecast accuracy decreases.





- Action may be taken based on ORANGE AND RED COLOUR warnings.
- Vulnerable regions likely urban and hilly areas action may be initiated for heavy rainfall warning.
- As the lead period increases forecast accuracy decreases.

Detailed district wise Multi Hazard weather warning for next five days available at <https://mausam.imd.gov.in/responsive/districtWiseWarningGIS.php>

**Weather forecast over Delhi/NCR during 02<sup>nd</sup> Mar. to 05<sup>th</sup> Mar. 2025****Past Weather:**

There has been a fall in minimum temperature upto 02°C and rise in maximum temperature upto 01°C over Delhi/NCR during the past 24 hours. The maximum and minimum temperatures over Delhi are in the range of 27 to 29°C and 13 to 15°C, respectively. The minimum temperature was above normal upto 2°C and maximum temperature was near normal over most places. Mainly clear sky conditions with predominant surface wind from the northeast direction with wind speeds less than 12 to 14 kmph prevailed during the past 24 hours. Mainly mist conditions with wind speed less than 10 kmph from the northwest direction prevailed over the region in the forenoon today.

**Weather Forecast:**

**02.03.2025:** Mainly clear sky. The maximum temperature over Delhi is likely to be in the range of 27 to 29°C. The predominant surface wind will likely be from the north-northeast direction with a wind speed of less than 14 kmph till evening. It would decrease thereafter becoming less than 06 kmph from the northwest direction during the night.

**03.03.2025:** Partly cloudy sky. Mist likely in the morning. The maximum and minimum temperatures over Delhi are likely to be in the range of 28 to 30°C and 12 to 14°C respectively. The predominant surface wind will likely be from the west direction with a wind speed of 06-08 kmph during morning hours. The wind speed will gradually increase thereafter becoming 14-16 kmph from the southwest direction during the afternoon. It will decrease becoming less than 10 kmph from the south direction during evening and night.

**04.03.2025:** Mainly clear sky. Strong surface winds (speed 20 – 30 kmph). Mist likely in the morning. The maximum and minimum temperatures over Delhi are likely to be in the range of 26 to 28°C and 15 to 17°C, respectively. The predominant surface wind will likely be from the northwest direction with a wind speed of 10-12 kmph during morning hours. The wind speed will gradually increase thereafter becoming 18-20 kmph from the northwest direction during the afternoon. It will decrease becoming less than 12 kmph from the northwest direction during evening and night.

**05.03.2025:** Mainly clear sky. Strong surface winds (speed 20 – 30 kmph). Mist likely in the morning. The maximum and minimum temperatures over Delhi are likely to be in the range of 25 to 27°C and 14 to 16°C, respectively. The predominant surface wind will likely be from the northwest direction with a wind speed of 12-14 kmph during morning hours. The wind speed will gradually increase becoming 18-20 kmph from the northwest direction in the afternoon. It will decrease becoming less than 12 kmph from the northwest direction during evening and night.

## Agromet advisories for likely impact of Heavy Rainfall / Snowfall / Hailstorm / Heat Wave

- Use hail nets or hail caps in fruit orchards and vegetable plants to protect them from mechanical damage in **Punjab**.
- Make provision for draining out excess water from the standing crop fields in **Jammu and Kashmir, Himachal Pradesh** and **Lakshadweep**. In the regions of heavy snowfall, shake the fruit bearing trees to remove snow immediately from the branches.
- In **Coastal Karnataka**, apply light and frequent irrigation to standing crops in the evening to protect them from heat waves.
- Keep the harvested produce in safer places or cover the produce with tarpaulin sheets in the fields.
- Provide mechanical support to horticultural crops and staking to vegetables to avoid lodging.

### Livestock and Fishery

- Keep the animals inside the shed during heavy rainfall/ hailstorm and provide them balanced feed.
- Store feed and fodder in a safe place to prevent spoilage.
- Check and disinfect poultry houses to avoid disease outbreaks due to dampness.
- Construct an outlet with proper netting around the ponds to drain out excess water, thereby preventing fish from escaping in case of overflow.

## Impact & Action Suggested due to heavy rainfall/ snowfall over Jammu-Kashmir-Ladakh-Gilgit-Baltistan-Muzaffarabad, Himachal Pradesh on 03<sup>rd</sup> March; heavy rainfall over Lakshadweep on 02<sup>nd</sup> March.

### A. Impact Expected

- ❖ Localized Flooding of roads, water logging in low lying areas and closure of underpasses mainly in urban areas of the above region.
- ❖ Occasional reduction in visibility due to heavy rainfall.
- ❖ Disruption of traffic in major cities due to water logging in roads leading to increased travel time.
- ❖ Minor damage to kutchha roads.
- ❖ Possibilities of damage to vulnerable structure.
- ❖ Localized Landslides/Mudslides
- ❖ Damage to horticulture and standing crops in some areas due to inundation.
- ❖ It may lead to riverine flooding in some river catchments (for riverine flooding please visit Web page of CWC).

### B. Action Suggested

- ❖ Check for traffic congestion on your route before leaving for your destination.
- ❖ Follow any traffic advisories that are issued in this regard.
- ❖ Avoid going to areas that face the water logging problems often.
- ❖ Avoid staying in vulnerable structure.



## Impact expected and action suggested due to isolated thunderstorm with lightning/gusty winds & hailstorm over Punjab on 03<sup>rd</sup> March.

### Impact expected:

- Strong wind/hail may damage plantation, horticulture and standing crops.
- Hail may injure people and cattle at open places.
- Partial damage to vulnerable structures due to strong winds.
- Minor damage to kutcha houses/walls and huts.
- Loose objects may fly.

### Action suggested:

- Stay indoors, close windows & doors and avoid travel if possible.
- Take safe shelters; do not take shelter under trees.
- Do not lie on concrete floors and do not lean against concrete walls.
- Unplug electrical/ electronic appliances.
- Immediately get out of water bodies.
- Keep away from all the objects that conduct electricity.

## Impact expected and action suggested due to Heat Wave conditions over Coastal Karnataka on 02<sup>nd</sup> & 03<sup>rd</sup> March.

### Yellow alert Areas:

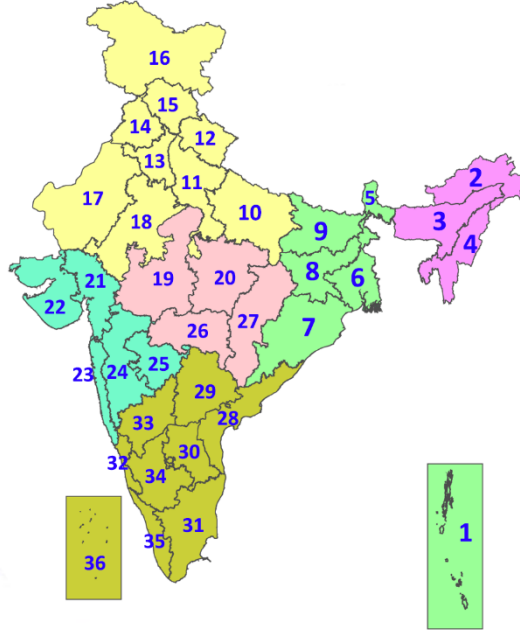
- Moderate temperature & heat is tolerable for general public but moderate health concern likely for vulnerable people e.g. infants, elderly, people with chronic diseases.
- Avoid heat exposure.
- Wear lightweight, light colour, loose, cotton clothes.
- Cover your head, use a cloth, hat or umbrella.

## Legends & abbreviations:

- ❖ **Heavy Rain:**64.5-115.5mm; **Very Heavy Rain:**115.6-204.4mm; **Extremely Heavy Rain:** >204.4mm.
- ❖ **Obsy:** Observatory; **AWS:** Automatic Weather Station; **ARG:** Automatic Rain Gauge; **dist:** District; **NH:** National Highway; **KVK:** Krishi Vigyan Kendra; **DVC:** Damodar Valley Corporation; **PTO:** Part Time Office, **Aero:** Aerodrome, **IAF:** Indian Air Force.
- ❖ **Region wise classification of meteorological Sub-Divisions:**
  - **Northwest India:** Western Himalayan Region (Jammu-Kashmir-Ladakh-Gilgit-Baltistan-Muzaffarabad, Himachal Pradesh and Uttarakhand); Punjab, Haryana-Chandigarh-Delhi; West Uttar Pradesh, East Uttar Pradesh, West Rajasthan and East Rajasthan.
  - **Central India:** West Madhya Pradesh, East Madhya Pradesh, Vidarbha and Chhattisgarh.
  - **East India:** Bihar, Jharkhand, Sub-Himalayan West Bengal & Sikkim; Gangetic West Bengal, Odisha and Andaman & Nicobar Islands.
  - **Northeast India:** Arunachal Pradesh, Assam & Meghalaya and Nagaland, Manipur, Mizoram & Tripura.
  - **West India:** Gujarat Region, Saurashtra & Kutch, Konkan & Goa, Madhya Maharashtra and Marathawada.
  - **South India:** Coastal Andhra Pradesh & Yanam, Telangana, Rayalaseema, Coastal Karnataka, North Interior Karnataka, South Interior Karnataka, Kerala & Mahe, Tamil Nadu, Puducherry & Karaikal and Lakshadweep.

## LEGENDS

1. अंडमान और निकोबार द्वीपसमूह
2. अरुणाचल प्रदेश
3. असम और मेघालय
4. नागालैंड, मणिपुर, मिजोरम और त्रिपुरा
5. उप-हिमालयी पश्चिम बंगाल और सिक्किम
6. गंगीय पश्चिम बंगाल
7. ओडिशा
8. झारखंड
9. बिहार
10. पूर्वी उत्तर प्रदेश
11. पश्चिम उत्तर प्रदेश
12. उत्तराखंड
13. हरियाणा, चंडीगढ़ और दिल्ली
14. पंजाब
15. हिमाचल प्रदेश
16. जम्मू और कश्मीर और लद्दाख
17. पश्चिम राजस्थान
18. पूर्वी राजस्थान
19. पश्चिम मध्य प्रदेश
20. पूर्वी मध्य प्रदेश
21. गुजरात
22. सौराष्ट्र
23. कोंकण और गोवा
24. मध्य महाराष्ट्र
25. मराठवाड़ा
26. विदर्भ
27. छत्तीसगढ़
28. तटीय आंध्र प्रदेश और यनम
29. तेलंगाना
30. रायलसीमा
31. तमिलनाडु, पुडुचेरी और कराईकल
32. तटीय कर्नाटक
33. आंतरिक उत्तरी कर्नाटक
34. आंतरिक दक्षिणी कर्नाटक
35. केरल और माहे
36. लक्षद्वीप



1. Andaman & Nicobar Islands
2. Arunachal Pradesh
3. Assam & Meghalaya
4. Nagaland, Manipur, Mizoram & Tripura
5. Sub-Himalayan West Bengal & Sikkim
6. Gangetic West Bengal
7. Odisha
8. Jharkhand
9. Bihar
10. East Uttar Pradesh
11. West Uttar Pradesh
12. Uttarakhand
13. Haryana, Chandigarh & Delhi
14. Punjab
15. Himachal Pradesh
16. Jammu & Kashmir and Ladakh
17. West Rajasthan
18. East Rajasthan
19. West Madhya Pradesh
20. East Madhya Pradesh
21. Gujarat
22. Saurashtra
23. Konkan & Goa
24. Madhya Maharashtra
25. Marathwada
26. Vidarbha
27. Chhattisgarh
28. Coastal Andhra Pradesh & Yanam
29. Telangana
30. Rayalaseema
31. Tamilnadu, Puducherry & Karaikal
32. Coastal Karnataka
33. North Interior Karnataka
34. South Interior Karnataka
35. Kerala & Mahe
36. Lakshadweep

## SPATIAL DISTRIBUTION (% of Stations reporting)

% Stations	Category	% Stations	Category
76-100	Widespread (WS/Most Places)	26-50	Scattered (SCT/A Few Places)
51-75	Fairly Widespread (FWS/Many Places)	1-25	Isolated (ISOL)

- |                      |                      |              |
|----------------------|----------------------|--------------|
| Fog                  | Heavy Snow           | Cold Wave    |
| Heavy Rain           | Dust Storm           | Cold Day     |
| Very Heavy Rain      | Heat Wave            | Ground Frost |
| Extremely Heavy Rain | Warm Night           |              |
| Thunder & Lightning  | Hot Day              |              |
| Hailstorm            | Hot & Humid          |              |
| Dust Raising Winds   | Strong Surface Winds |              |

### COLOUR CODED WARNING

No Warning (No Action)
Watch (Be Aware)
Alert (Be Prepared To Take Action)
Warning (Take Action)

### Probabilistic Forecast

Terms	Probability of Occurrence (%)
Unlikely	< 25
Likely	25 - 50
Very Likely	50 - 75
Most Likely	> 75

\* Red colour warning does not mean "Red Alert", Red colour warning means "Take Action".  
Forecast and Warning for any day is valid from 0830 hours IST of day till 0830 hours IST of next day.  
For more details, kindly visit <https://mausam.imd.gov.in> or contact: 011-2434-4599  
(Service to the Nation since 1875)

## DEFINITION/CRITERIA

<b>Rain/ Snow *</b>	<b>Heavy:</b> 64.5 to 115.5 mm/cm * <b>Very Heavy:</b> 115.6 to 204.4 mm/cm * <b>Extremely Heavy:</b> > 204.4 mm/cm *
<b>Heat Wave</b>	<b>When maximum temperature of a station reaches <math>\geq 40^{\circ}\text{C}</math> for plains and <math>\geq 30^{\circ}\text{C}</math> for hilly regions</b> <b>(a) Based on Departure from normal</b> <b>Heat Wave:</b> Maximum Temperature Departure from normal $4.5^{\circ}\text{C}$ to $6.4^{\circ}\text{C}$ . <b>Severe Heat Wave:</b> Maximum Temperature Departure from normal $\geq 6.5^{\circ}\text{C}$ <b>(b). Based on Actual maximum temperature</b> <b>Heat Wave:</b> When actual maximum temperature $\geq 45^{\circ}\text{C}$ . <b>Severe Heat Wave:</b> When actual maximum temperature $\geq 47^{\circ}\text{C}$ <b>(c). Criteria for heat wave for coastal stations</b> When maximum temperature departure is $> 4.5^{\circ}\text{C}$ from normal. Heat Wave may be described provided maximum temperature $\geq 37^{\circ}\text{C}$
<b>Warm Night</b>	<b>When maximum temperature remains <math>40^{\circ}\text{C}</math></b> <b>Warm Night:</b> When minimum temperature departure $4.5^{\circ}\text{C}$ to $6.4^{\circ}\text{C}$ . <b>Severe Warm Night:</b> When minimum temperature departure $> 6.4^{\circ}\text{C}$ .
<b>Cold Wave</b>	<b>When minimum temperature of a station <math>\leq 10^{\circ}\text{C}</math> for plains and <math>\leq 0^{\circ}\text{C}</math> for hilly regions.</b> <b>(a). Based on departure</b> <b>Cold Wave:</b> Minimum Temperature Departure from normal $-4.5^{\circ}\text{C}$ to $-6.4^{\circ}\text{C}$ . <b>Severe Cold Wave:</b> Minimum Temperature Departure from normal $\leq -6.5^{\circ}\text{C}$ <b>(b) Based on actual Minimum Temperature (for Plains only)</b> <b>Cold Wave :</b> When Minimum Temperature is $\leq 4.0^{\circ}\text{C}$ <b>Severe Cold Wave:</b> When Minimum Temperature is $\leq 2.0^{\circ}\text{C}$ <b>(c) For Coastal Stations</b> When Minimum Temperature departure is $\leq -4.5^{\circ}\text{C}$ & actual Minimum Temperature is $\leq 15^{\circ}\text{C}$
<b>Cold Day</b>	<b>When minimum temperature of a station <math>\leq 10^{\circ}\text{C}</math> for plains and <math>\leq 0^{\circ}\text{C}</math> for hilly regions</b> <b>Based on departure</b> <b>Cold Day:</b> Maximum Temperature Departure from normal $-4.5^{\circ}\text{C}$ to $-6.4^{\circ}\text{C}$ . <b>Severe Cold Day:</b> Maximum Temperature Departure from normal $\leq -6.5^{\circ}\text{C}$
<b>Fog</b>	<b>Phenomenon of small droplets suspended in air and the horizontal visibility <math>&lt; 1\text{km}</math></b> <b>Moderate Fog:</b> When the visibility between 500-200 metres <b>Dense Fog:</b> when the visibility between 50- 200 metres <b>Very Dense Fog:</b> when the visibility $< 50$ metres
<b>Thunderstorm</b>	Sudden electrical discharges manifested by a flash of light (Lightning) and a sharp rumbling sound (thunder)
<b>Dust/Sand Storm</b>	An ensemble of particles of dust or sand energetically lifted to great heights by a strong and turbulent wind.
<b>Frost</b>	<b>Ice deposits on ground</b> Air temperature $\leq 4^{\circ}\text{C}$ ( over Plains)
<b>Squall</b>	<b>A strong wind that rises suddenly, lasts for atleast 1 minute.</b> <b>Moderate:</b> Wind speed 52-61 kmph <b>Severe:</b> Wind speed 62-87 kmph <b>Very Severe:</b> Wind speed $> 87$ kmph
<b>Sea State</b>	<b>Effect of various waves in the sea over specific area</b> <b>Rough to very rough:</b> Wind speed 41-62 kmph (22-33 knots) & Wave height 2.5-6 metre <b>High to very high:</b> Wind speed 63-117 kmph ( 34-63 knots) & Wave height 6-14 metre <b>Phenomenal:</b> Wind speed $> 117$ kmph ( $> 63$ knots) & Wave height $> 14$ metre
<b>Cyclone</b>	<b>Cyclonic Storm:</b> Wind speed 62-87 kmph (34-47 knots) <b>Severe Cyclonic Storm:</b> Wind speed 88-117 kmph (48-63 knots) <b>Very Severe Cyclonic Storm:</b> Wind speed 118-165 kmph (64 - 89 knots) <b>Extremely Severe Cyclonic Storm:</b> Wind speed 166-220 kmph (90 -119 knots) <b>Super Cyclone Strom:</b> Wind speed $> 220$ kmph ( $> 119$ knots)

\* Red colour warning does not mean "Red Alert", Red colour warning means "Take Action".  
 Forecast and Warning for any day is valid from 0830 hours IST of day till 0830 hours IST of next day.  
 For more details, kindly visit <https://mausam.imd.gov.in> or contact: 011-2434-4599  
 (Service to the Nation since 1875)

**Hot and Humid:** When maximum temperatures remain  $3^{\circ}\text{C}$  above normal along with the above normal relative humidity.